

Lower Thames Crossing

6.2 Environmental Statement Figures

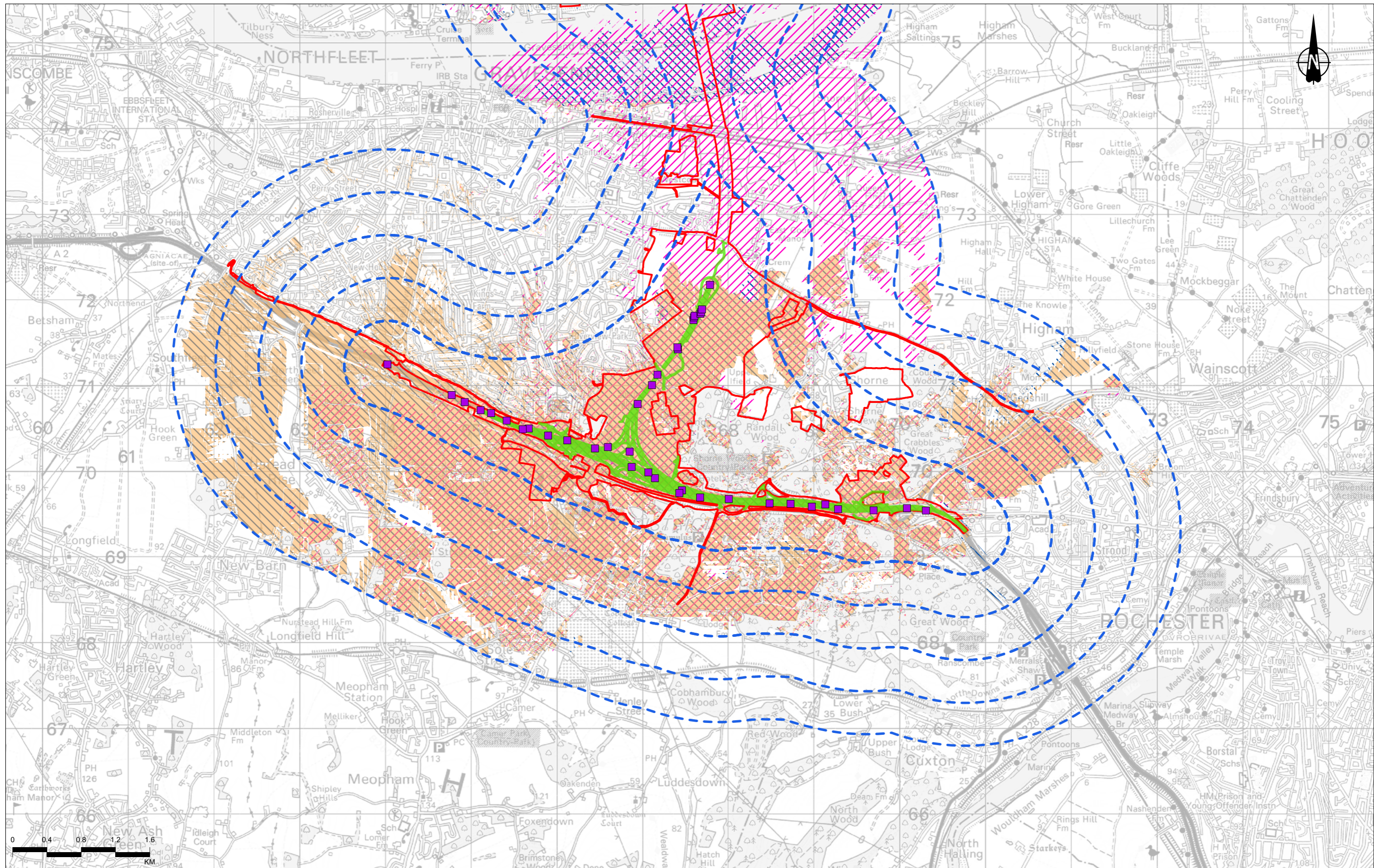
Figure 7.12 - ZTV (2.5km) - Lower Thames Crossing route Analysis Overview (1 of 2)

APFP Regulation 5(2)(a)
Infrastructure Planning
(Applications: Prescribed Forms and Procedure)
Regulations 2009
Volume 6

DATE: October 2022

Planning Inspectorate Scheme Ref: TR010032
Application Document Ref: TR010032/APP/6.2

VERSION: 1.0



Contains Ordnance Survey data. © Crown copyright and database rights 2022. Ordnance Survey 100030649

Rev	Status	Rev. Date	Purpose of revision	Drawn	Chkd	Apprvd
P03	S8	10/08/2022	DCO Application	RC	SK	BF

Legend

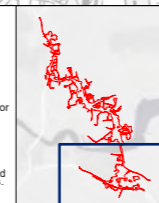
- Order Limits
- Gantry locations considered within ZTV
- Route alignment, overbridges, side roads and access roads considered within Zone of Theoretical Visibility
- 2.5km study area (500m interval offset)

Zone of Theoretical Visibility (ZTV):

- ZTV for route alignment (including gantries)
- ZTV for vehicles travelling along overbridge structures, side roads and access roads
- ZTV for vehicles travelling along the route alignment (including gantries)

Notes:

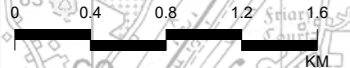
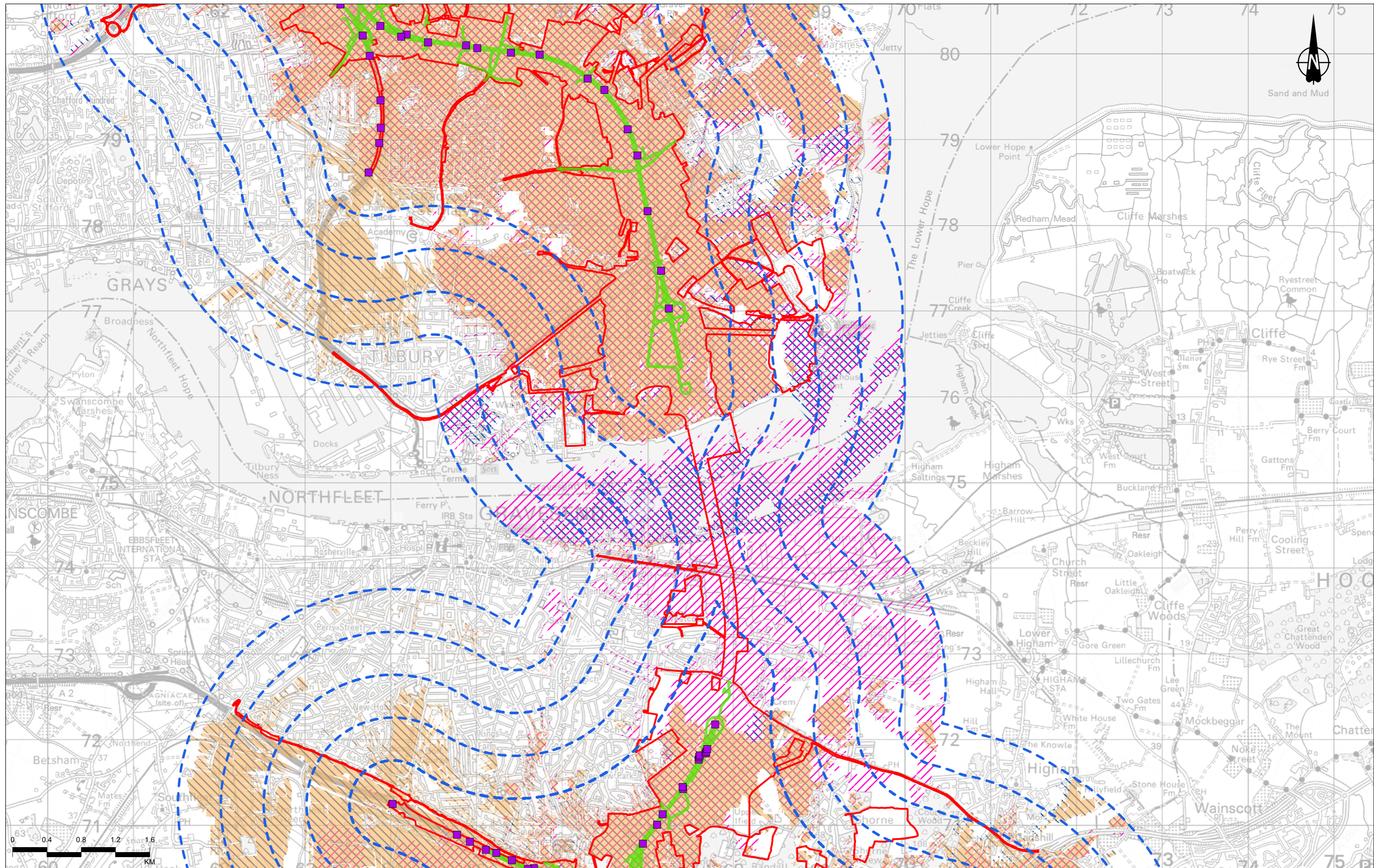
- The Zone of Theoretical Visibility (ZTV) was created using Esri ArcGIS (Visibility tool). It is based on the combined 1m Digital Surface Model (DSM). This has been compiled from data received from National Highways.
- The ZTV illustrates the area of theoretical visibility of the proposed segments of the Project and a view height of 2m and is limited to a 2.5km study area.
- The ZTV for vehicles travelling along route alignment and ZTV for overbridge structures road access (ZTV) have been run using an assumed maximum vehicle height of 4.5m.
- This figure shows theoretical visibility and therefore the worst case extent to which the Project could be visible from the surrounding landscape. The actual extent of visibility is likely to be substantially less than shown on this figure, in particular within urban areas where with the exception of settlement edges, outward views are typically screened by existing buildings or other features.



Client: national highways

Project: LOWER THAMES CROSSING

Status	DCO APPLICATION	Original Size	A3	Revision	P03
Application Document Number	TR010032/APP/6.2	Scale	1:40,000		
Drawing Title	Figure 7.12 - ZTV (2.5km) - Lower Thames Crossing route Analysis Overview				
Drawing Number	HE540039-CJV-ELS-SZP_EGNE00000000-DR-LE-50031				
Page 1 of 5					



- Legend**
- Order Limits
 - Gantry locations considered within ZTV
 - Route alignment, overbridges, side roads and access roads considered within Zone of Theoretical Visibility
 - 2.5km study area (500m interval offset)

- Zone of Theoretical Visibility (ZTV):**
- ZTV for route alignment (including gantries)
 - ZTV for vehicles travelling along overbridge structures, side roads and access roads
 - ZTV for vehicles travelling along the route alignment (including gantries)

Notes:

1. The Zone of Theoretical Visibility (ZTV) was created using Esri ArcGIS (Visibility_Sol) - it is based on the combined 1m Digital Surface Model (DSM). This has been compiled from data received from National Highways.
2. The ZTV illustrates the area of theoretical visibility of the proposed segments of the Project and a view height of 2m and is limited to a 2.5km study area.
3. The ZTV for vehicles travelling along route alignment and ZTV for overbridge/side roads/access roads have been run using an assumed maximum vehicle height of 4.5m.
4. This figure shows theoretical visibility and therefore the worst case extent to which the Project could be visible from the surrounding landscape. The actual extent of visibility is likely to be substantially less than shown on this figure, in particular within urban areas where with the exception of settlement 'outward views' are typically screened by existing buildings or other features.

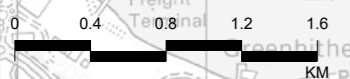
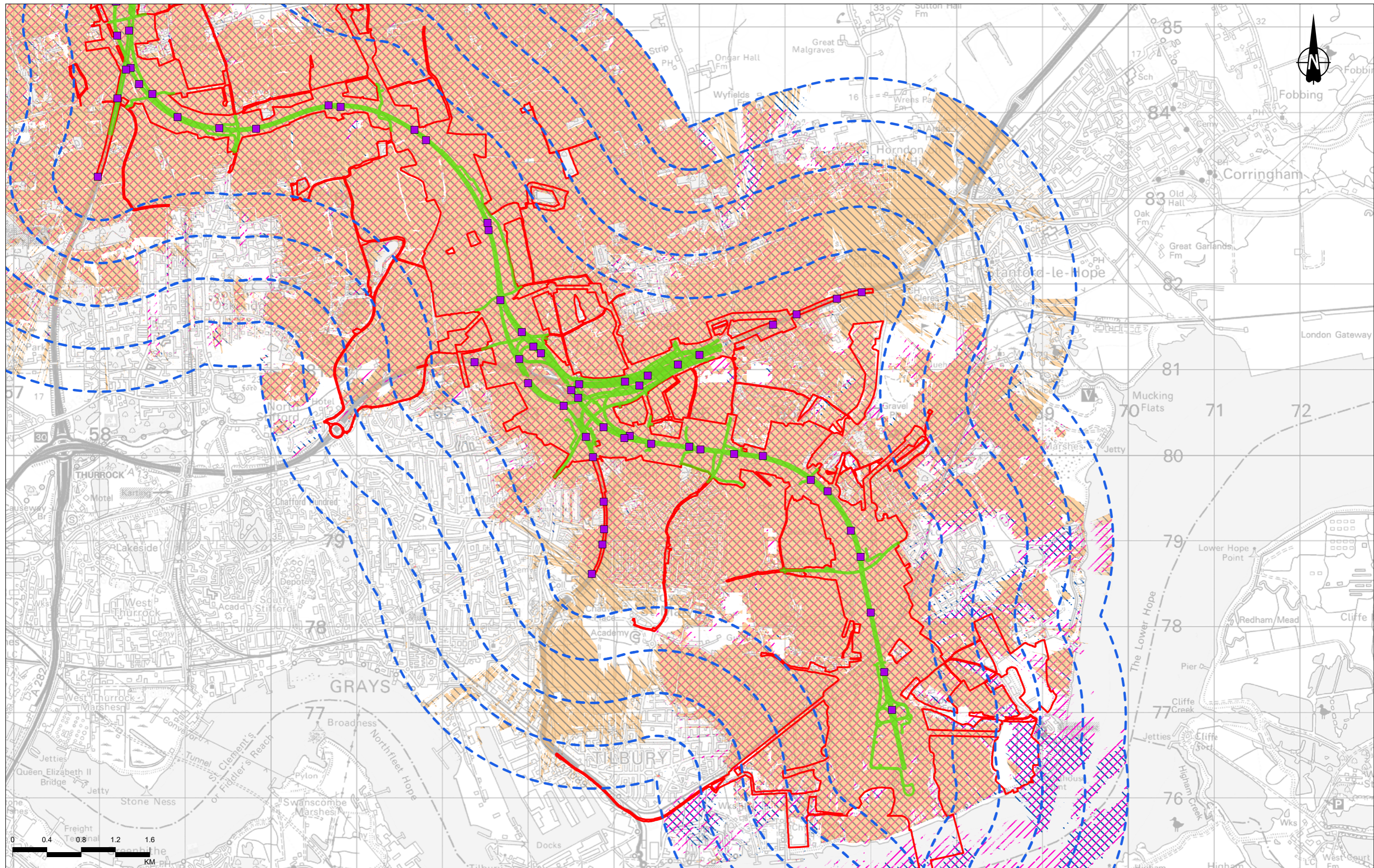


Client: **national highways**

Project: **LOWER THAMES CROSSING**

Status	DCO APPLICATION	Original Size	A3	Revision	P03
Application Document Number	TR010032/APP/6.2	Scale	1:40,000		
Drawing Title	Figure 7.12 - ZTV (2.5km) - Lower Thames Crossing route Analysis Overview				
Drawing Number	HE540039-CJV-ELS-SZP_EGNE00000000-DR-LE-50031				
Page 2 of 5					

Rev	Status	Rev. Date	Purpose of revision	Drawn	Chkd	Apprv
P03	S8	10/08/2022	DCO Application	RC	SK	BF



- Legend**
- Order Limits
 - Gantry locations considered within ZTV
 - Route alignment, overbridges, side roads and access roads considered within Zone of Theoretical Visibility
 - 2.5km study area (500m interval offset)

- Zone of Theoretical Visibility (ZTV):**
- ZTV for route alignment (including gantries)
 - ZTV for vehicles travelling along overbridge structures, side roads and access roads
 - ZTV for vehicles travelling along the route alignment (including gantries)

Notes:

1. The Zone of Theoretical Visibility (ZTV) was created using Esri ArcGIS (Visibility Sol) - it is based on the combined 1m Digital Surface Model (DSM). This has been compiled from data received from National Highways.
2. The ZTV illustrates the area of theoretical visibility of the proposed alignment of the Project and a view height of 2m and is limited to a 2.5km study area.
3. The ZTV for vehicles travelling along route alignment and ZTV for overbridge/side roads/access roads have been run using an assumed maximum vehicle height of 4.5m.
4. This figure shows theoretical visibility and therefore the worst case extent to which the Project could be visible from the surrounding landscape. The actual extent of visibility is likely to be substantially less than shown on this figure, in particular within urban areas where with the exception of settlement edges, outward views are typically screened by existing buildings or other features.



Client: **national highways**

Project: **LOWER THAMES CROSSING**

Status	DCO APPLICATION	Original Size	A3	Revision	P03
Application Document Number	TR010032/APP/6.2	Scale	1:40,000		
Drawing Title	Figure 7.12 - ZTV (2.5km) - Lower Thames Crossing route Analysis Overview				
Drawing Number	HE540039-CJV-ELS-SZP_EGNE00000000-DR-LE-50031				
Page 3 of 5					

P03	S8	10/08/2022	DCO Application	RC	SK	BF
Rev	Status	Rev. Date	Purpose of revision	Drawn	Chkd	Apprvd

If you need help accessing this or any other National Highways information, please call **0300 123 5000** and we will help you.

© Crown copyright 2022.

You may re-use this information (not including logos) free of charge in any format or medium, under the terms of the Open Government Licence. To view this licence:

visit www.nationalarchives.gov.uk/doc/open-government-licence/

write to the **Information Policy Team, The National Archives, Kew, London TW9 4DU**, or email psi@nationalarchives.gsi.gov.uk.

Mapping (where present): © Crown copyright and database rights 2022 OS 100030649. You are permitted to use this data solely to enable you to respond to, or interact with, the organisation that provided you with the data. You are not permitted to copy, sub-license, distribute or sell any of this data to third parties in any form.

If you have any enquiries about this publication email info@nationalhighways.co.uk or call **0300 123 5000***.

*Calls to 03 numbers cost no more than a national rate call to an 01 or 02 number and must count towards any inclusive minutes in the same way as 01 and 02 calls. These rules apply to calls from any type of line including mobile, BT, other fixed line or payphone. Calls may be recorded or monitored.

Printed on paper from well-managed forests and other controlled sources when issued directly by National Highways.

Registered office Bridge House, 1 Walnut Tree Close, Guildford GU1 4LZ

National Highways Company Limited registered in England and Wales number 09346363